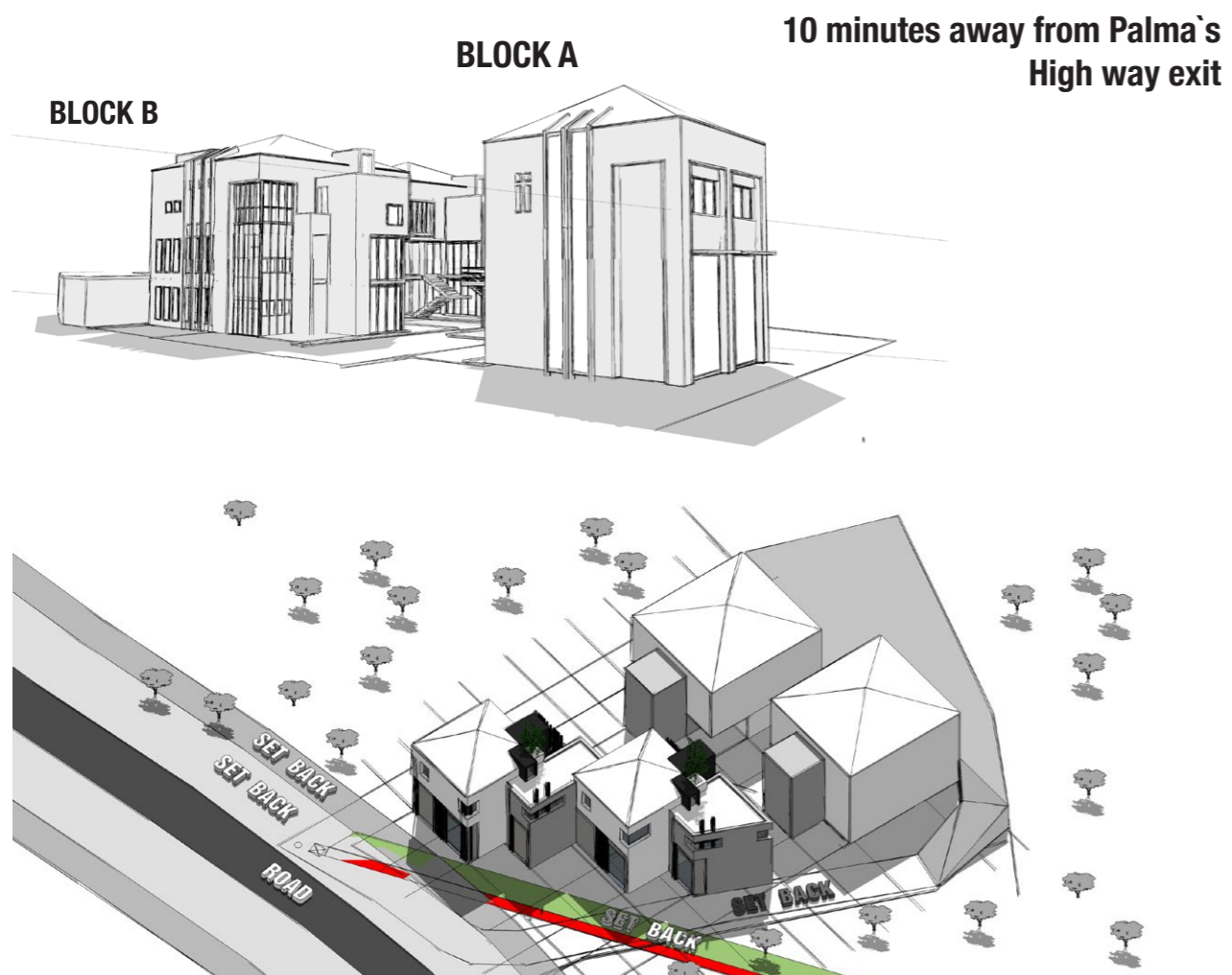
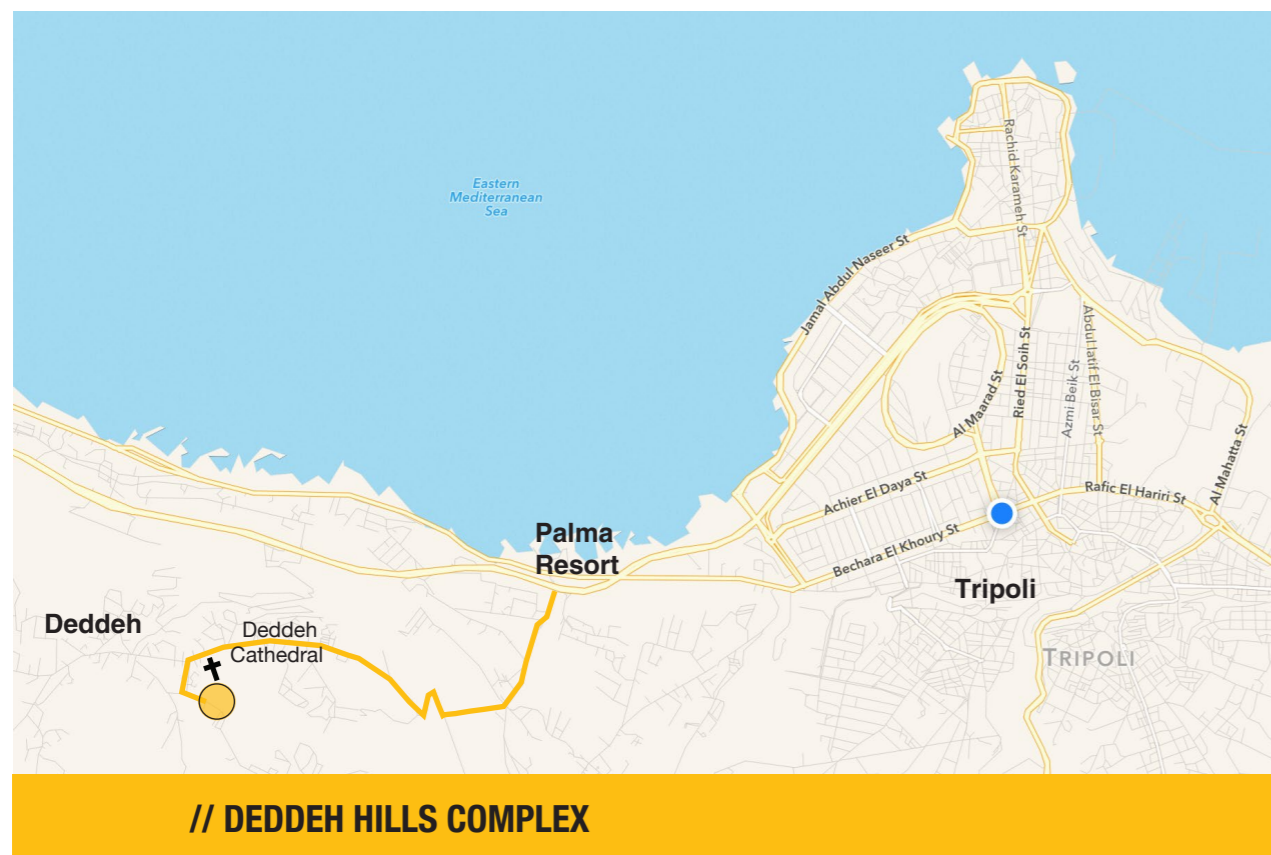


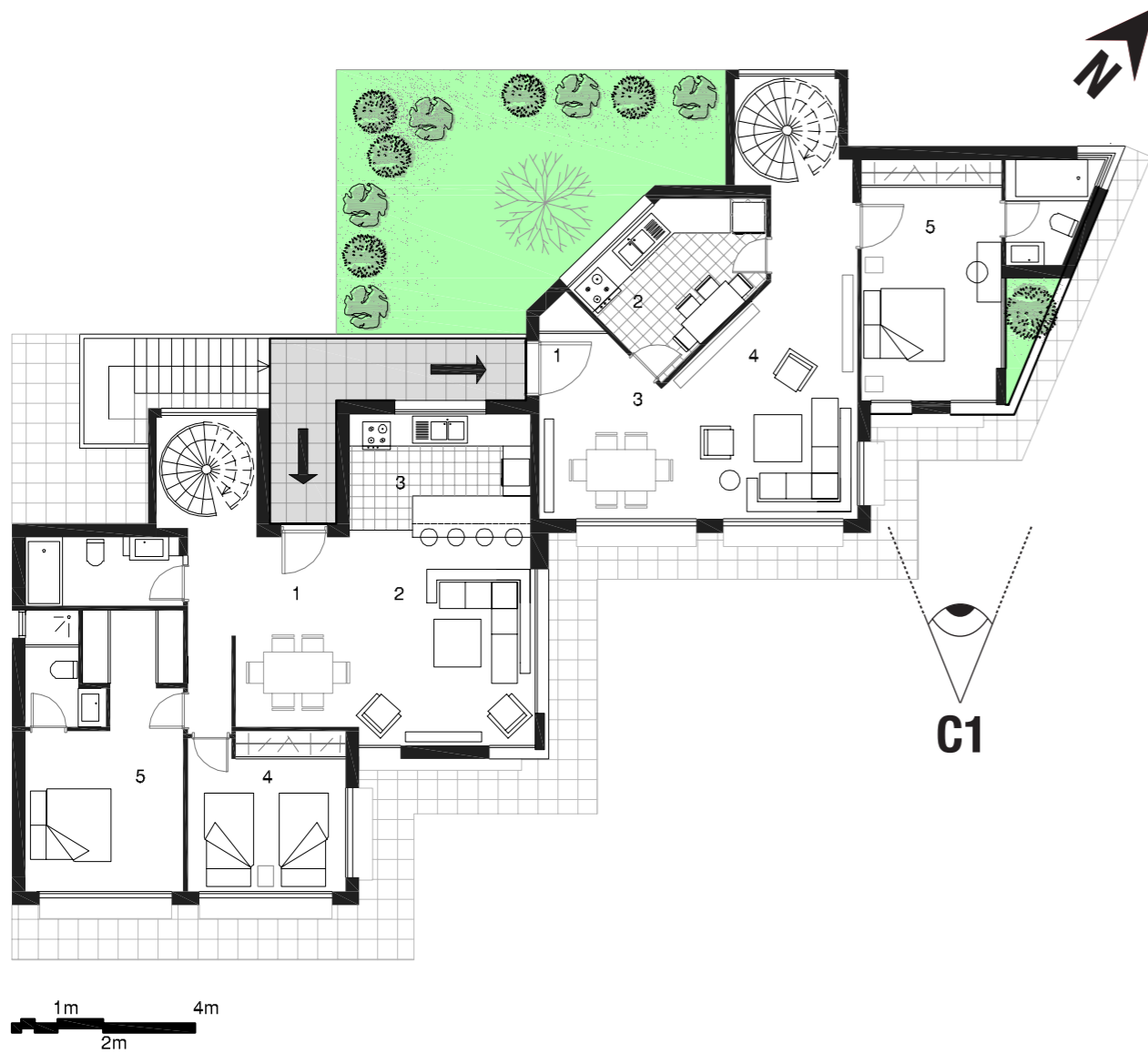
DEDDER HEIGHTS

COMPLEX





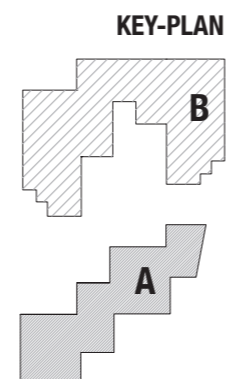
// CAMERA 1
ROOF TERRACE

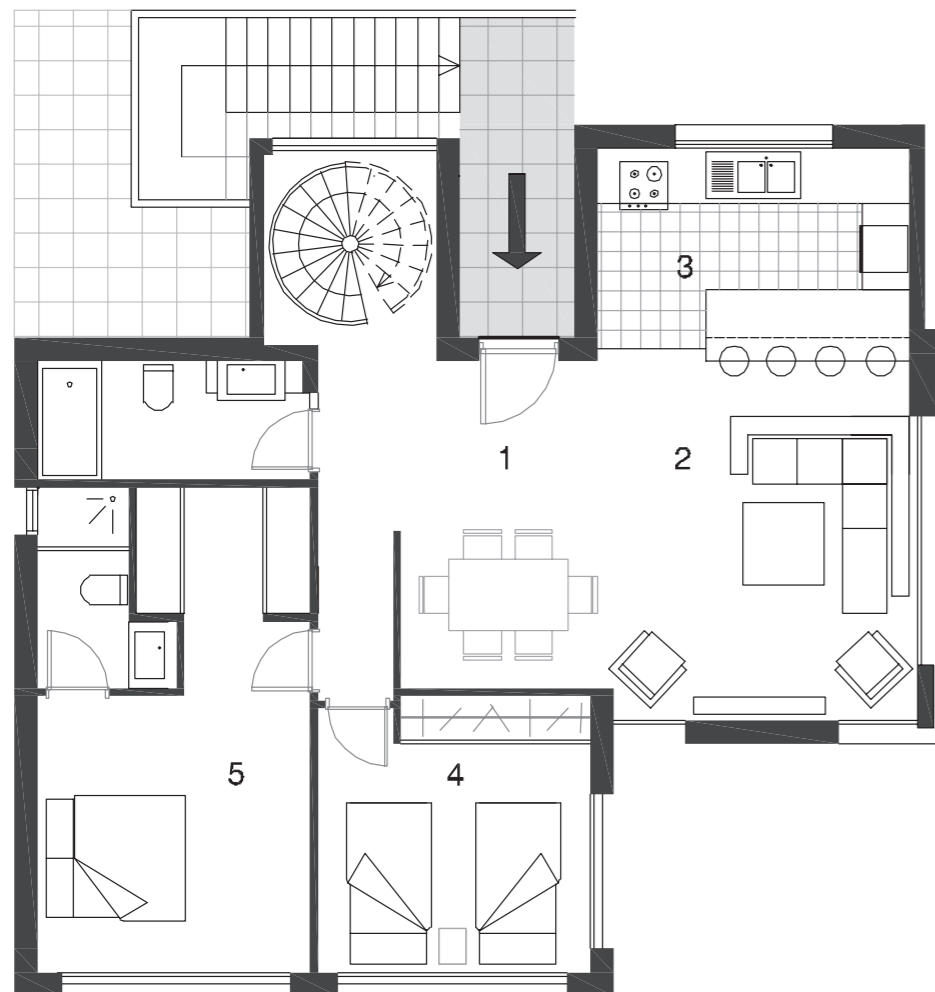


// BLOCK A:

Description

Block A consists of two duplexes positioned over 6 double height retail shops, exposed to Freres School road between Deddeh and Barsa, with a set back of 25m from the main road center.



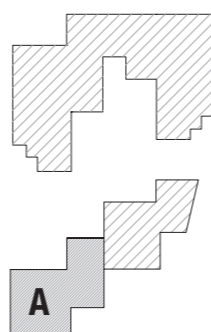


//APARTMENT A:

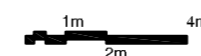
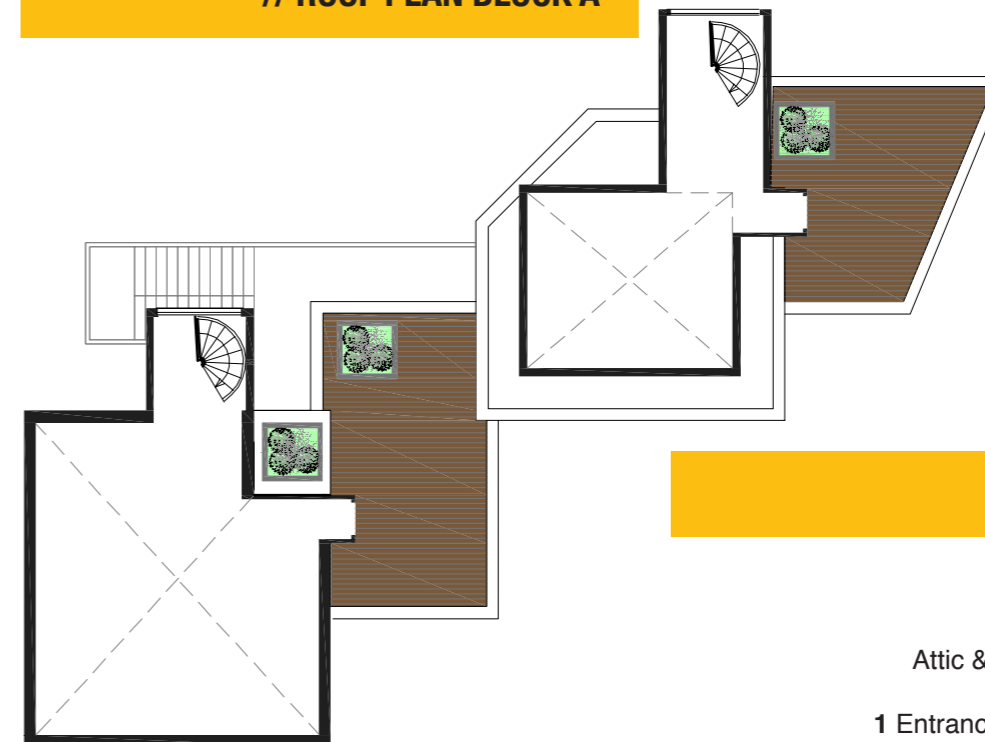
Net area **100 sq m**
Attic & terrace area **94 sq m**

- 1** Entrance Lobby: **1.6m x 5.5m**
- 2** Living: **4m x 4.7m**
 - Dining: **2.8m x 3.6m**
- 3** Kitchen: **2.7m x 4.m**
- 4** Bedroom: **3.5m x 3.5m**
 - Bathroom: **3.4m x 1.5**
- 5** Master Bedroom: **3.6m x 4.5m**
 - Walking Closet: **2.4m x 1.7m**
 - Bathroom: **1.7m x 2.5m**
 - Attic: **7m x 7.75m**
 - Terrace: **3.9m x 7.75m**

KEY-PLAN

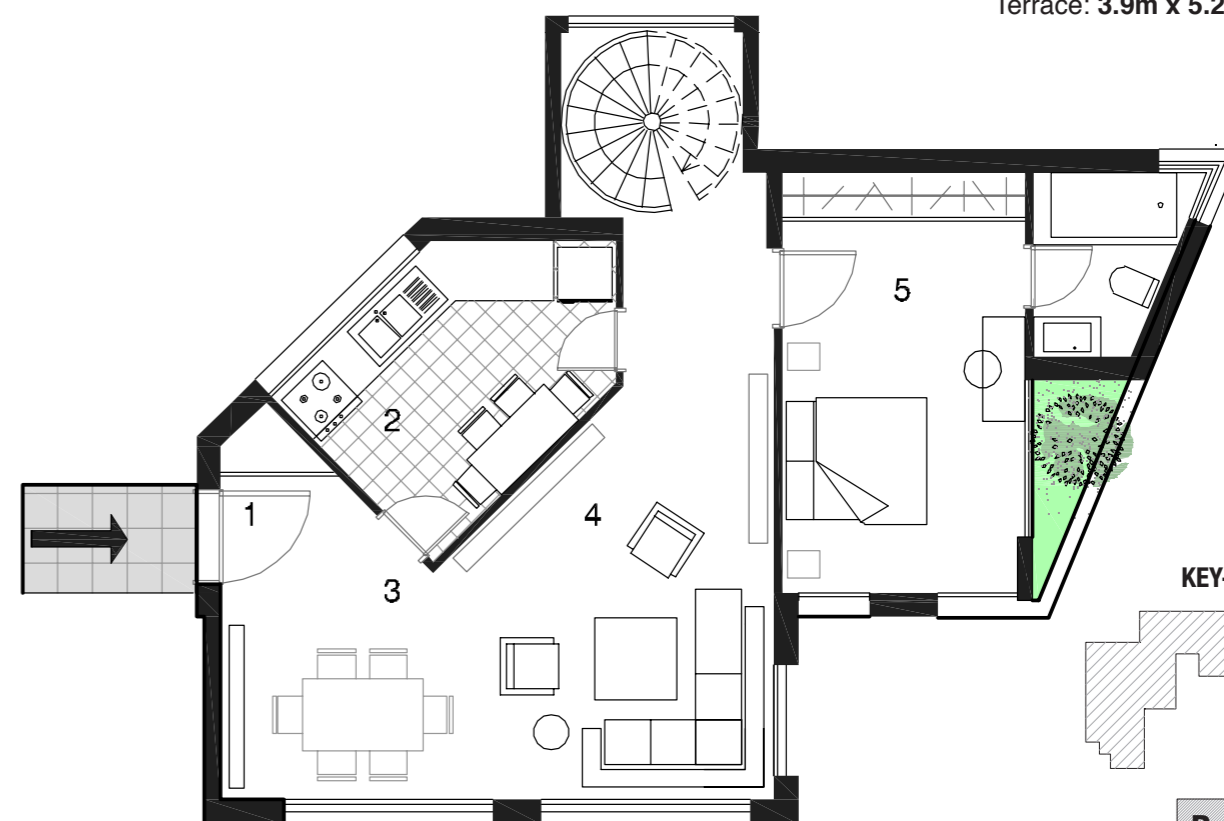


// ROOF PLAN BLOCK A

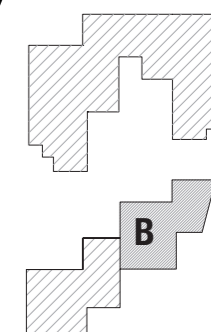


//APARTMENT B:

- Net area **86 sq m**
Attic & terrace area **80 sq m**
- 1** Entrance Lobby: **2.0m x 2.5m**
- 2** Dinning: **2.8m x 3.7m**
- 3** Living: **3.2m x 5.2m**
- 4** Kitchen: **2.9m x 3.9m**
- 5** Master Bedroom: **3.1m x 5.2m**
 - Bathroom: **2.3 x 1.9**
 - Attic: **7m x 7m**
 - Terrace: **3.9m x 5.2m**

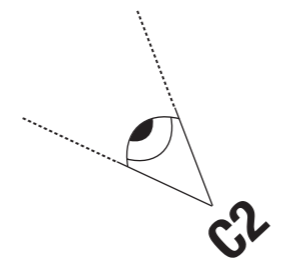


KEY-PLAN

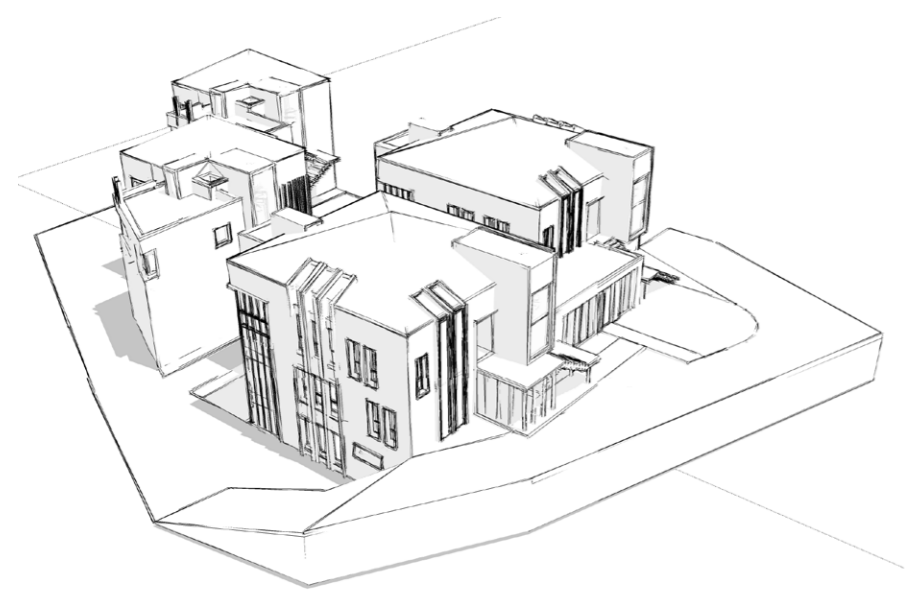




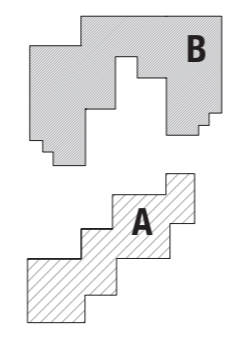
1m 2m 4m



// GROUND FLOOR PLAN



KEY-PLAN



//BLOCK B:

// CAMERA 2
BLOCK -B-, WEST VIEW,
INTOVERTED GARDEN

Description

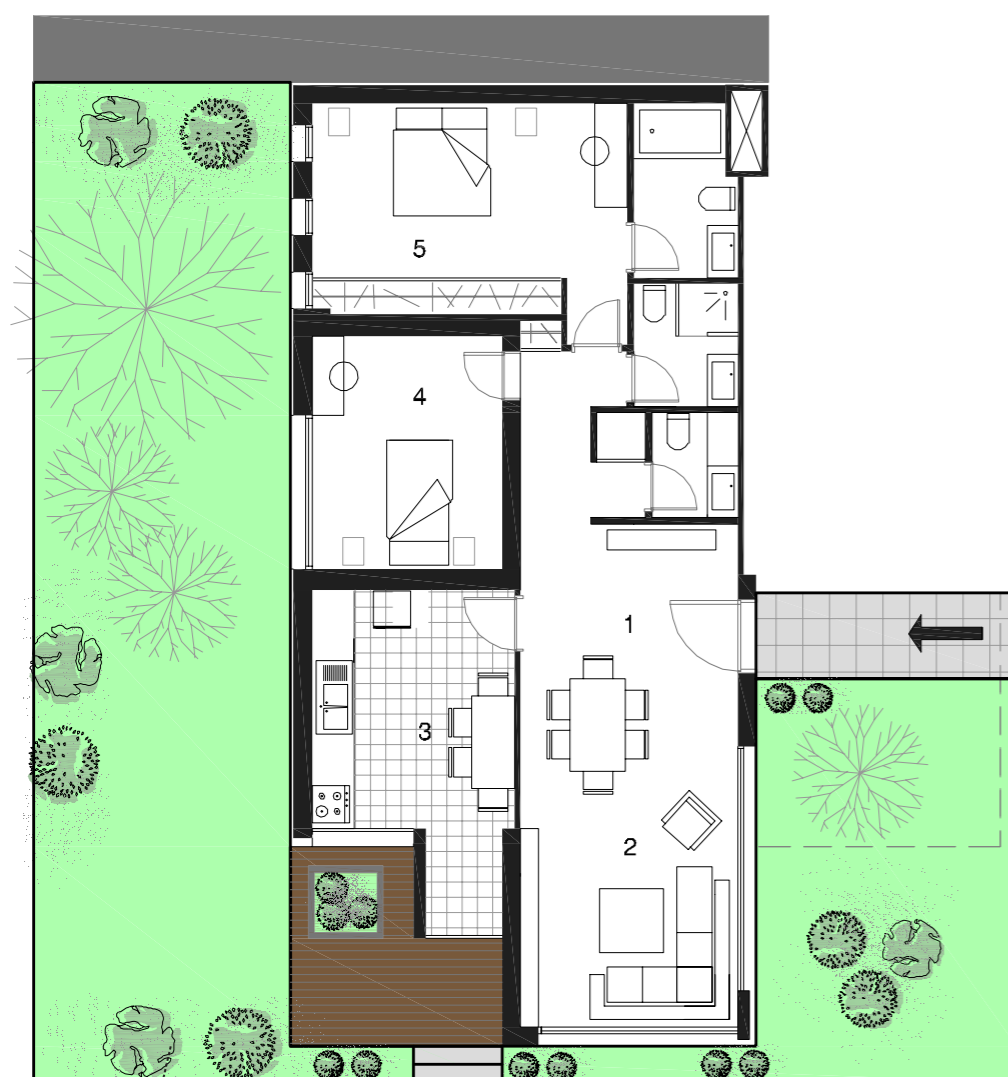
Block B consists of 3 types of apartments C - D & E.
Type C two apartments with garden and terrace on each side, and other two without a garden. In the middle of the block B a consecutive apartments D & D` Centred on top of each other. While on the upper level lays two Big Duplexes, with a pitched roof on top.

Your place is one of ten modern flats perched on top of stylish stores and surrounded by mini gardens, patios and rooftops



Arch. M.O.Kabbara - 2016

// CAMERA 3
BLOCK -B-, NORTH VIEW

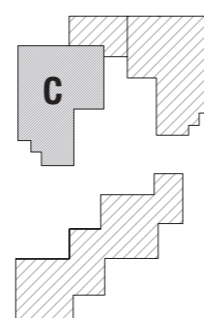


//APARTMENT C:

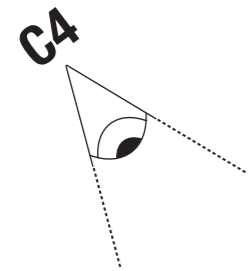
Level 0
Net area **102 sqm**
Garden Area **100 sqm**

- 1 Entrance Lobby: **1.6m x 1.7m**
- 2 Dining: **2.7m x 3.85m**
- 3 Living: **4.1m x 3.85**
- Guest W.C.: **2.3 m x 1.7**
- 4 Kitchen: **3.2m x 3.85m**
- 5 Bedroom: **3.0m x 3.2m**
- Bathroom: **1.9m x 1.7m**
- 6 Master Bedroom: **4.0m x 3.7m**
- Bathroom: **3.0m x 1.7m**

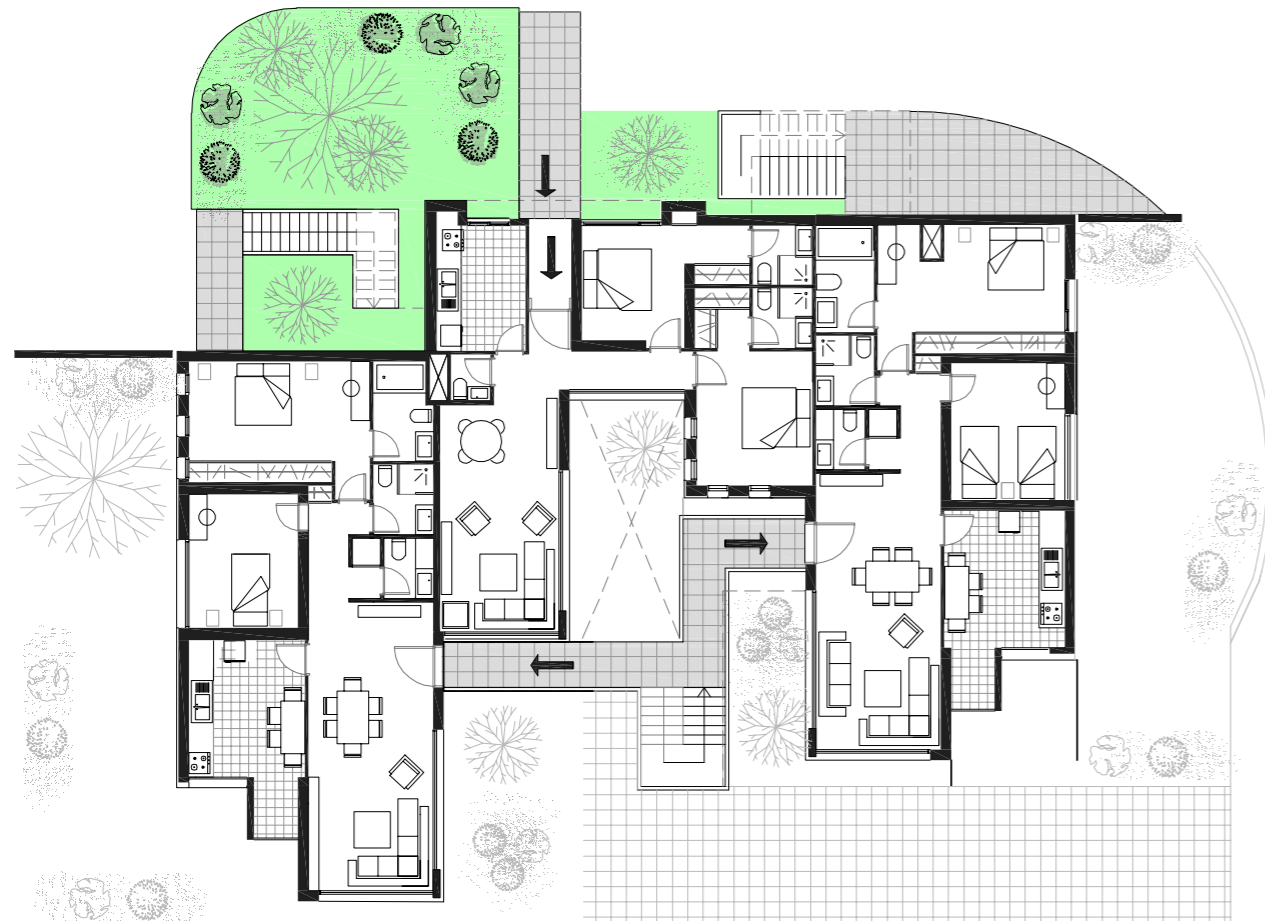
KEY-PLAN



Arch. M.O.Kabbara - 2016



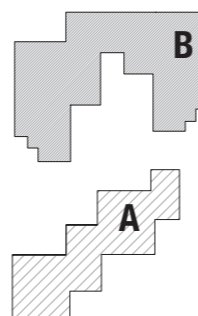
// CAMERA 4
EAST VIEW, ROOF TERRACE,
APARTMENT -D- ENTRANCE



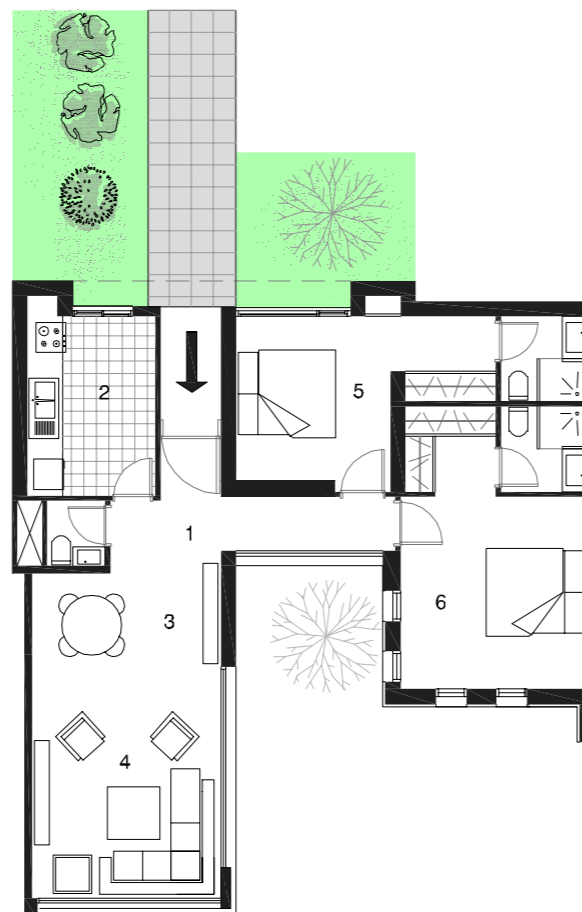
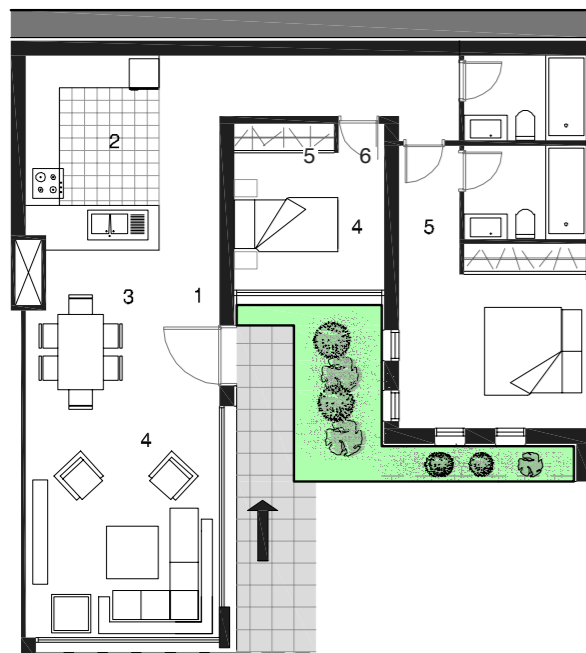
1m 2m 4m

// 1ST FLOOR PLAN

KEY-PLAN



Arch. M.O. Kabbara - 2016



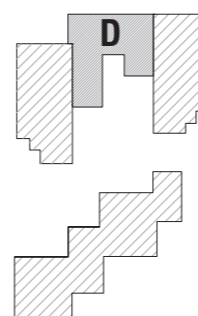
//APARTMENT D':

Level 1

Net area 102 sq m
Garden area 40 sq m

- 1 Entrance Lobby: 1.2m x 3.7m
- 2 Kitchen: 2.6m x 3.5m
- 3 Dining: 2.7m x 3.85m
- 4 Living: 4.1m x 3.85m
- Guest W.C.: 1.2m x 1.2m
- 5 Bedroom: 3.2m x 3.2m
- Walking closet: 1.8m x 1.7m
- Bathroom: 1.7m x 1.7m
- 6 Master Bedroom: 4.0m x 3.7m
- Walking closet: 1.8m x 1.7m
- Bathroom: 1.7m x 1.7m

KEY-PLAN



//APARTMENT D:

Level 0

Net area 102 sqm

- 1 Entrance Lobby: 1.6m x 1.7m
- 2 Kitchen: 3.2m x 3.85m
- 3 Dining: 2.7m x 3.85m
- 4 Living: 4.1m x 3.85m
- 5 Bedroom: 3.0m x 3.2m
- Bathroom: 3.0m x 1.7m
- 6 Master Bedroom: 4.0m x 3.7m
- Bathroom: 3.0m x 1.7m



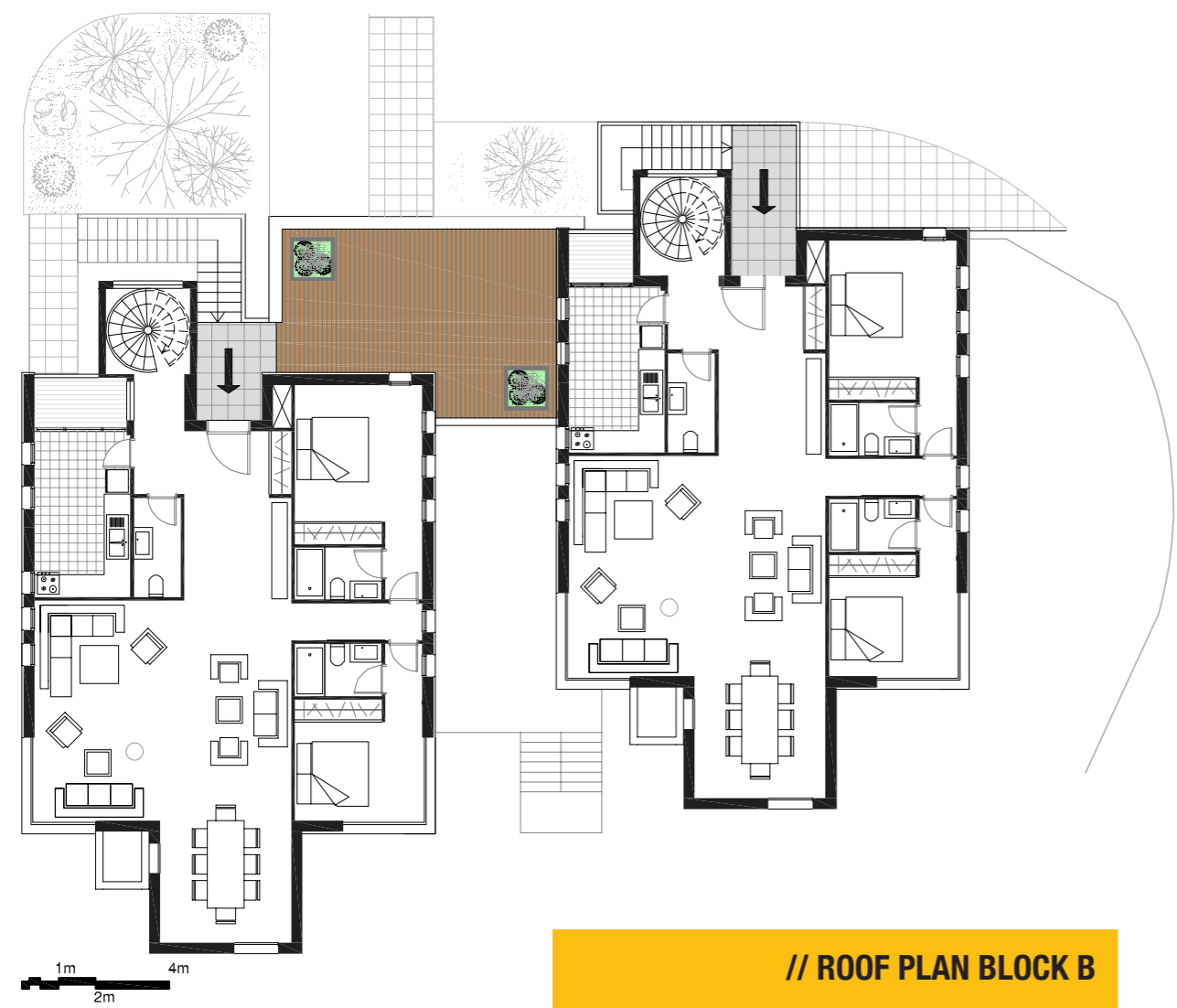
Arch. M.O.Kabbara - 2016

// CAMERA 5
EAST VIEW, ROOF TERRACE,
APARTMENT -E- ENTRANCE,
GARDEN, PRIVATE PARKING

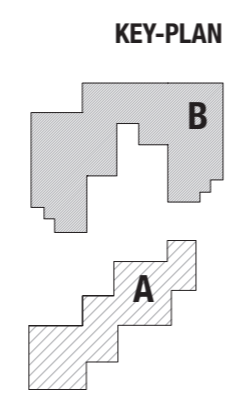
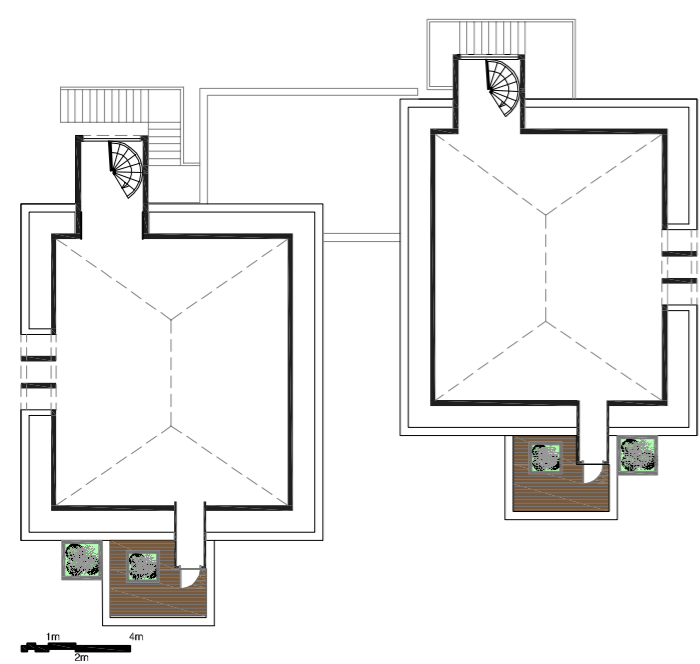


C5

// 3RD FLOOR PLAN BLOCK B



// ROOF PLAN BLOCK B



We have thought of everything, the brick clad walls contrast with the brute concrete facades and merge with the green landscape around the complex. Wide windows offer you a magnificent view and smart space design gives you the feeling that you are practically living outdoors.



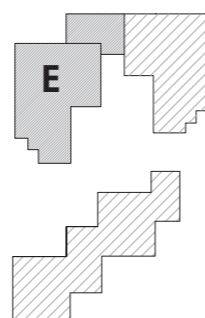


//APARTMENT E:

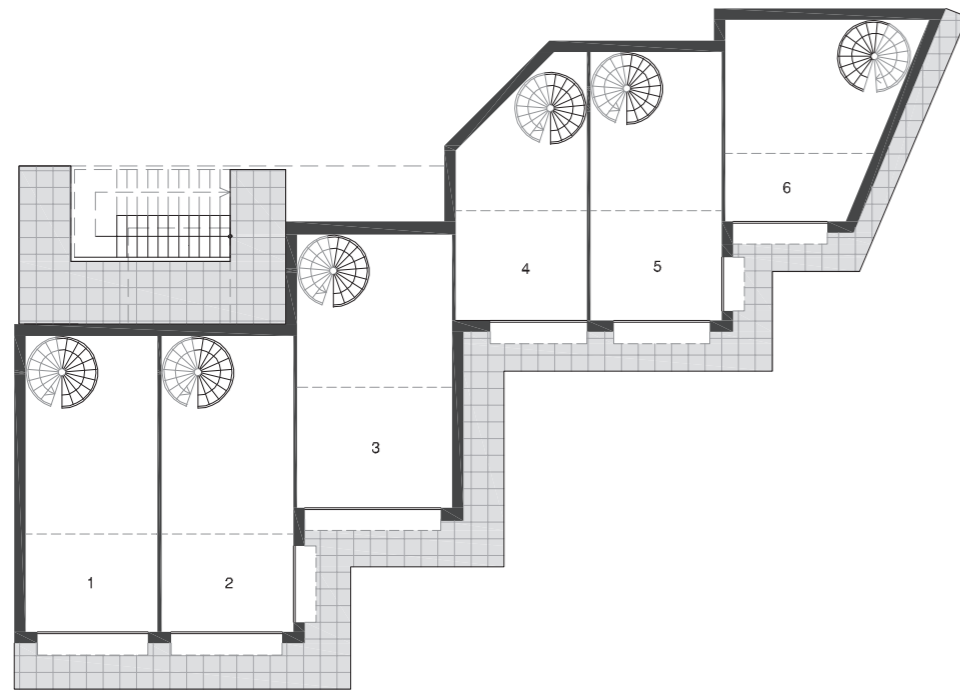
Level 2
 Net area 153 sq m
 Garden area 100 sq m
 Terrace area 50 sq m
 Attic area 115 sq m

- 1 Entrance Lobby: 2.9m x 4.6m
- 2 Kitchen: 4.5m x 2.6m
- 3 Living: 6.0m x 7.0m
- 4 Dinning: 3.6m x 3.6m
- Guest W.C.: 2.7m x 1.3m
- 5 Bedroom: 4.3m x 3.5m
- Bathroom: 2.3m x 1.4m
- 6 Bedroom: 3.5m x 3.4m
- Bathroom: 2.3m x 1.4m
- Balcony: 2.5m x 1.5m

KEY-PLAN



//STORE PLAN BLOCK A



1m 2m 4m

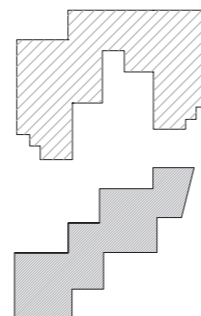
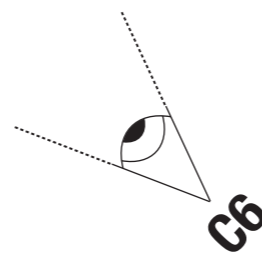
// STORE 1&2:
 Mezzanine: 3.45m x 5.2m
 Ground Floor: 3.45m x 7.75m
 Basement: 3.45m x 13m

// STORE 3:
 Mezzanine: 4.05m x 4.0m
 Ground Floor: 4.05m x 7.15m
 Basement: 4.05m x 13m

// STORE 4:
 Mezzanine: 3.4m x 2.9m
 Ground Floor: 3.4m x 5.8m
 Basement: 3.4m x 13m

// STORE 5:
 Mezzanine: 3.4m x 4.15m
 Ground Floor: 3.4m x 7.0m
 Basement: 3.4m x 13m

// STORE 6:
 Mezzanine: 3.8m x 3.5m
 Ground Floor: 3.8m x 5.2m
 Basement: 3.8m x 13m



Arch. M.O.Kabbara - 2016

// CAMERA 6
WEST VIEW, MAIN STREET,
RETAIL STORES, MAIN FACADE

- Double glazed windows
- Private entrances
- Modern design kitchens with wood textured cabinets and grey resin top
- Embedded wardrobes and walking closets

- Double walls with thermal insulation
- Solar powered hot water
- Two main secure gates and a fence surrounding the project
- Flexibility in having open kitchens and open spaces



// CONTACT US:

Owner: Mr.Oussama Kabbara
70/093609
81/252868
06/439084
Tripoli - Lebanon
Mira Tower Building
8th floor

// LEAD DESIGNERS:

Architect. Mohamed O. Kabbara
Interior Designer. Minkara Sahar
Civil Engineer. Bilal Hage Hussien

// Follow us:

[www.facebook.com/
Deddeh-Heights-Complex](http://www.facebook.com/Deddeh-Heights-Complex)

[www.facebook.com/
MO-Kabbara-Architecture-Design-Studio](http://www.facebook.com/MO-Kabbara-Architecture-Design-Studio)

MO.KABBARA
ARCHITECTURE
DESIGN
STUDIO